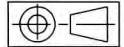


FASCO MOTORS MAY PROVIDE TECHNICAL ASSISTANCE TO OUR CUSTOMERS IN MANY AREAS. HOWEVER, SINCE FASCO MOTOR IS NOT AWARE OF ALL DATA CONCERNING THE USE AND APPLICATION OF THIS MOTOR, THE FITNESS OF THE MOTOR FOR THE APPLICATION MUST BE DETERMINED BY AND IS THE RESPONSIBILITY OF THE CUSTOMER.



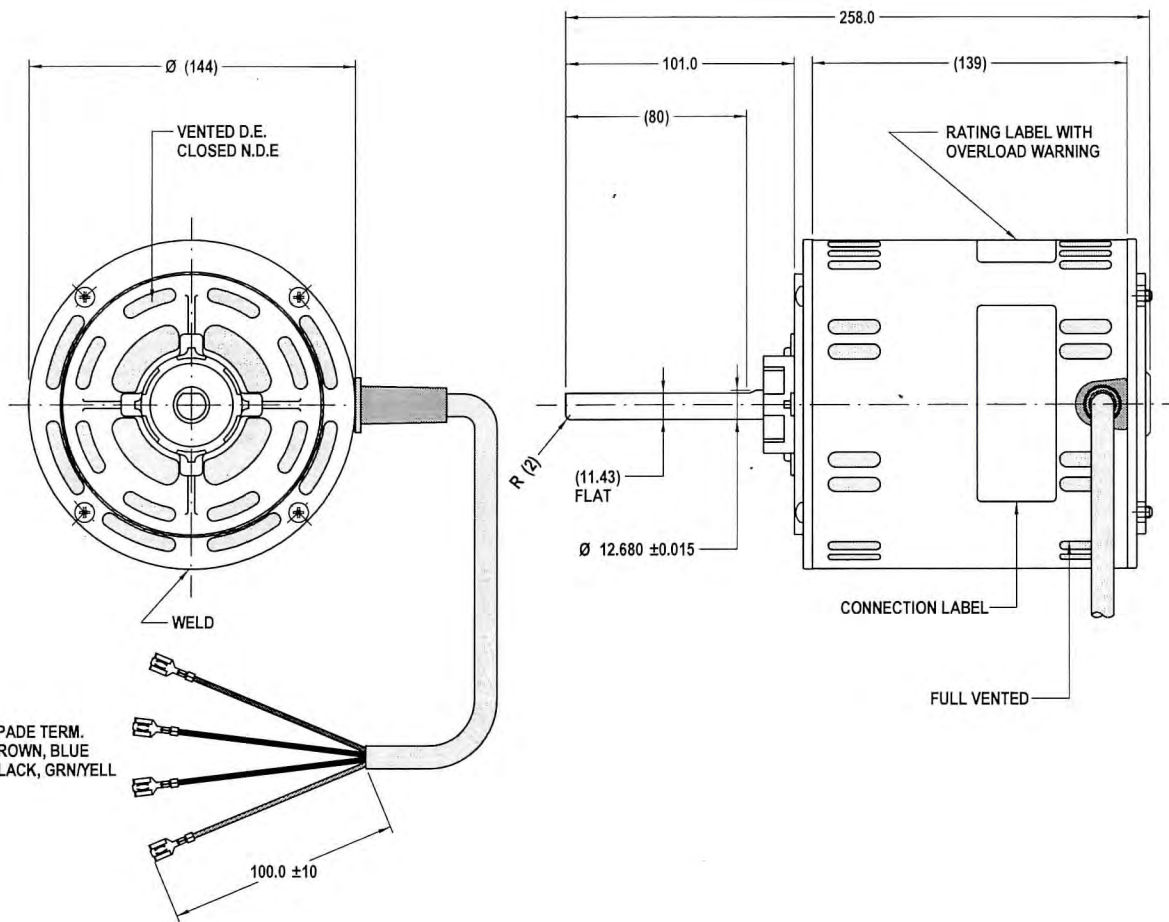
**MOTOR SPECIFICATION**

FINAL INSPECTED MOTORS MUST COMPLY WITH ELECTRIC MOTOR VIBRATION SPECIFICATION (ES049)

THIRD ANGLE PROJECTION

**80855BQVA-A25**

Q.R. No.	Y002802	CUSTOMER NO.	6051675						
CUSTOMER	CLIMATE TECHNOLOGIES								
MOTOR RATING	VOLTS	240	Hz	50	Ph	1	Duty	AOM	
	RPM.	1370			4.4				AMPS
	NOM. OUTPUT	750 WATTS							
ROTATION	CLOCKWISE DRIVE END								
CAPACITOR	START	-----	μF/V	RUN	25/400		μF/V		
ENCLOSURE	VENTED								
MOTOR TYPE	CSR	INSULATION CLASS	B130						
THERMAL PROTECTION	AUTO RESET OVERLOAD								
APPLICATION	FAN-EVAPORATIVE COOLER								
BEARING D.E.	6202 DDU C3			LUBRICATION	LONG LIFE, WIDE RANGE				
BEARING N.D.E.	6202 DDU C3								
SUPPLY LEAD	FLEX 850 ± 30 GREY								
EARTH PROVISION	VIA SUPPLIED LEAD								
BASIC BUILD SPECIFICATION	305-570-25		PAINT/ COLOUR	PC GREY CASE PLAIN E/SHIELDS					
PERFORMANCE SPECIFICATION	SP85375-01								
CONNECTION DIAGRAM	393-402-06		RATING LABEL	SSTDAUTO.FMT					



DESIGNED AND MANUFACTURED TO AUSTRALIAN STANDARDS & SPECIFICATIONS

**C N693**

6051675 ddmmyyxxxxx  
MODEL 80855BQVA-A25

VOLTS 240	R.P.M. 1370	CLASS B130	Hz 50
WATTS 750	TYPE CSR	μF/ S NIL	Ph 1
AMPS 4.4	DUTY AOM	μF/ R 25/400	PROT. AUTO

**WARNING**

MOTOR FITTED WITH INTERNAL AUTO RESET OVERLOAD AND MAY RESTART WITHOUT WARNING

SPECIAL REQUIREMENTS:

- 1)\_CAPACITOR SUPPLIED BY CUSTOMER
- 2)\_MOTOR MUST BE LOAD TESTED.

MIC No. 009284

BY: NITHAD  
Date: 12/07/05

MIC NEW MODEL RELEASED  
Notes:

8 pages

