

FAN DECKS

DXC SERIES - STEEL WHEEL

DXG SERIES - PLASTIC WHEEL

REGAL[®]

INTRODUCTION

DESCRIPTION

This type of fan is a direct drive fan deck, referring to the use of twin forward curved fan blowers mounted onto a base tray. The fan features a centrally mounted double shaft motor, directly coupled to the forward curved wheels inside the blower housings.

The direct drive fan decks wheels can be made from 2 different materials, high temp plastic or metal.

A range of motors are available ranging from 180W through to 1500W, achieving airflow performance of up to 2200 l/s.

All motors are fitted with thermal overload protection and insulation that conforms to Class B. F Class motors can be fitted upon request.

All performance data featured in this catalogue have been carried out on an air flow chamber conforming to design requirements stated in BS848.

All tests are carried out in non-ducted or type A insulation.

PART NUMBER IDENTIFICATION

When placing an order the blower product code should be specified. The product code of the blower is composed in accordance with the following example:

D	X	G	2	0	3	T	2	0	3	-	4	0	1
1	2	3	4 - 6			7	8 - 10				11-13		

POSITION 1

Type of drive

D = Direct

POSITION 2

Configuration

X = Twin housings double inlet

POSITION 3

Wheel type

A = Louvre strip (R)

C = Steel

G = Plastic

POSITIONS 4 TO 6

Wheel diameter

In millimeters

POSITION 7

Housing

DASH = Standard housing

T = Tight housing

POSITIONS 8 TO 10

Wheel width

In millimeters

POSITIONS 11 TO 13

Final code

ODD NUMBERS = Mechanical build variance

Code examples:

DXC241-241-541

DXG203T203-404

FAN DECKS

241MM DIAMETER • 241MM WIDTH

HOUSING

G2 Galvabond®* Steel Z275

MOTOR

240 volts, 50 Hz
 4 Pole
 3 Speed
 Ball Bearings
 Class B Insulation
 Automatic Thermal Overload Protection

WHEEL

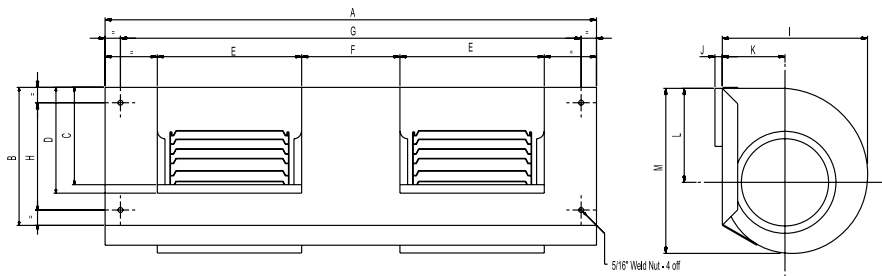
Steel

Unit Weight (kg)	23.0
Motor Part #	809455SVA-B12
Phase / Type	1ph CSR
Watts Output	1100
Venting	Fully
Main Lead	1500
Connectors	B and E on earth
Capacitor Size	30 MFD
Capacitor Lead	1500
Connectors	F

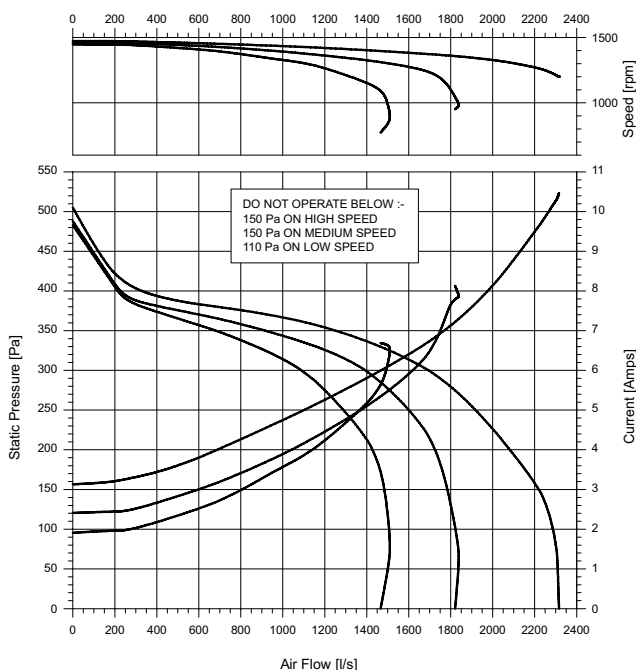
B: Bootlace
 E: Eyelet
 F: Flag Terminals + Insulator on capacitor lead

DIMENSIONS

	A	B	C	D	E	F	G	H	I	J	K	L	M
DXC241-241-541	1040	304	185	195	300	338	990	250	380	-	185	220	392



PERFORMANCE GRAPH



WIRING DIAGRAM

